



GAT MONTHLY MEMBERSHIP PROGRESS REPORT

Results as of: 1/31/2024

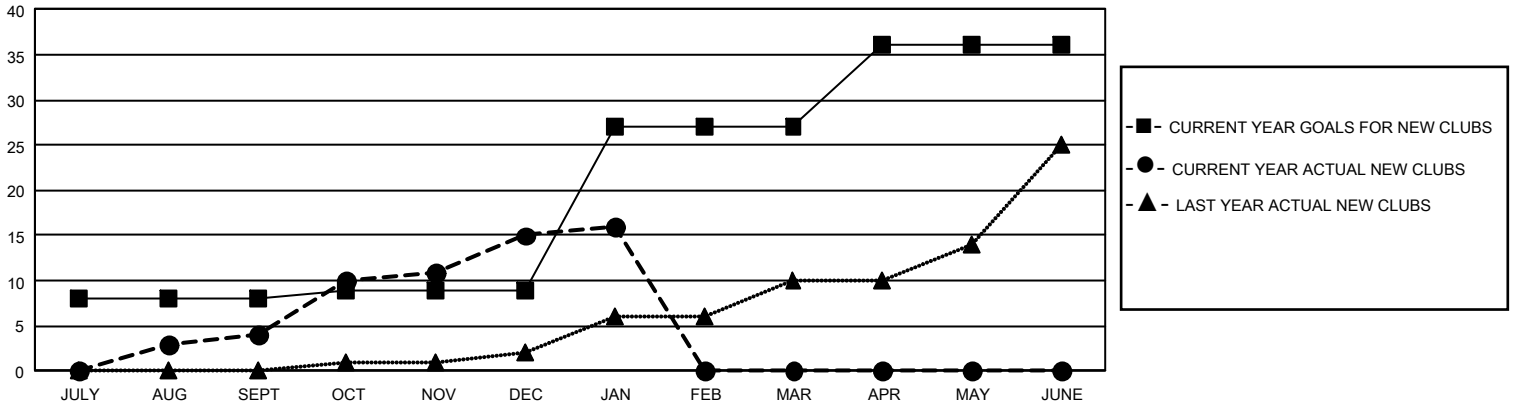
GMT Constitutional Area 8, Group A

REPORT DOES NOT INCLUDE CLUBS IN UNDISTRICTED AREAS.

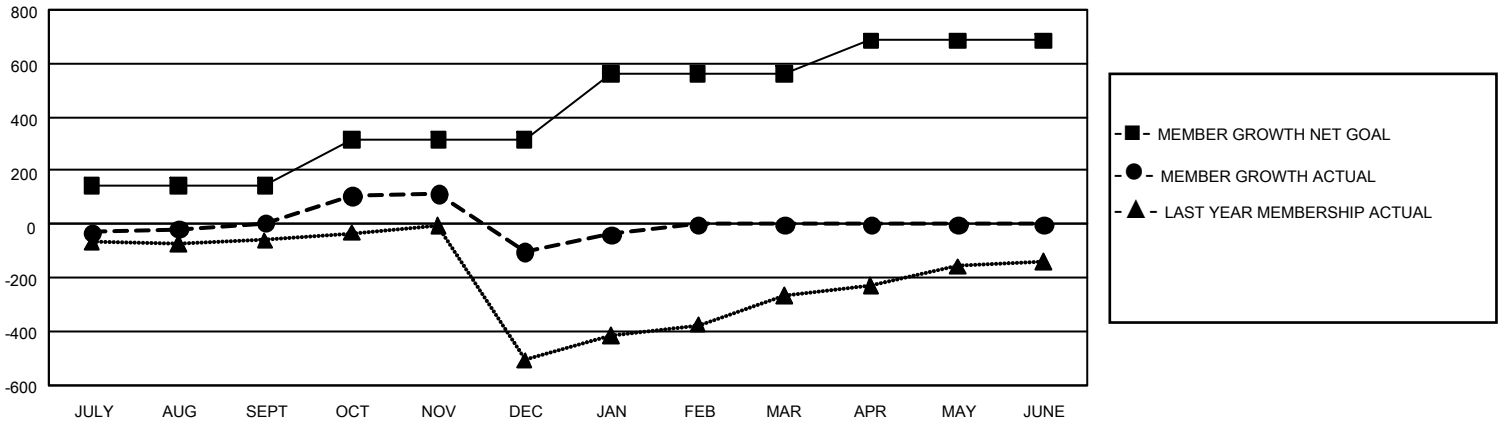
Clubs			
RESULTS FOR 2023-2024			
QUARTER	NEW CLUB GOAL	NEW CLUBS	DROPPED CLUBS
JULY/AUG/SEPT	24	4	3
OCT/NOV/DEC	3	11	8
JAN/FEB/MAR	54	1	0
APR/MAY/JUNE	27	0	0

Members			
RESULTS FOR 2023-2024			
QUARTER	MEMBER GROWTH NET GOAL	MEMBER GROWTH ACTUAL	DROPPED MEMBERS ACTUAL (including transfers)
JULY/AUG/SEPT	145	276	249
OCT/NOV/DEC	170	532	604
JAN/FEB/MAR	245	116	47
APR/MAY/JUNE	126	0	0

GOALS AND ACTUAL NEW CLUBS CUMULATIVE



GOALS AND ACTUAL MEMBERS CUMULATIVE



DROPPED CLUBS: 11	166 CLUBS OF 415 ADDED 1 OR MORE NEW MEMBERS	<u>GENDER DISTRIBUTION</u>	
<u>DROPPED MEMBERS</u>		MALE	6,449 (70.00%)
DECEASED	24	FEMALE	2,762 (29.98%)
CLUB CANCELLED	172	NON BINARY	0 (0.00%)
OTHER	704	PREFER NOT TO ANSWER	2 (0.02%)
TOTAL	900	TOTAL FAMILY UNIT MEMBERS	182
	CLICK HERE FOR CUMULATIVE MEMBERSHIP DATA	FAMILY MEMBERS PAYING HALF DUES	98